



Alpine Spring Festival

Bolzano

4th - 8th March 2013

**The impacts of climate change
on hydrological cycle**

Bruno Majone & Alberto Bellin
University of Trento

THE ALPINE CONVENTION IS THE FIRST INTERNATIONAL TREATY FOR THE PROTECTION AND PROMOTION OF THE SUSTAINABLE DEVELOPMENT OF A CROSS-BORDER MOUNTAINOUS REGION
italian presidency 2013-2014
alpine convention



ALPINE CONVENTION

Permanent Secretariat of the Alpine Convention

info@alpcnv.org

www.alpcnv.org

Some Questions

- What do we understand by climate change?
- What are the impacts of climate change on water resources and the water sector?
- How do we adapt to climate change?



Open Problems

- To identify present trends in the system:
 - External forcing: separation between natural and anthropogenic components;
 - River basin status: identification of changes associated to anthropogenic effects (forestation or de-forestation, land use changes, etc.).
- Scenarios and projections
 - High uncertainty associated to projections;
 - IPCC scenarios are usually adopted;
 - Complex and non-linear interaction between different spatial scales (global and local);
 - Infrastructures will be able to cope with projected changes?





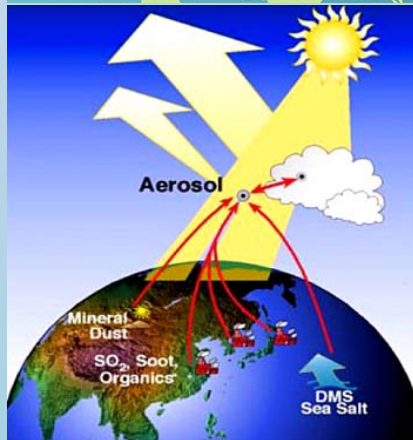
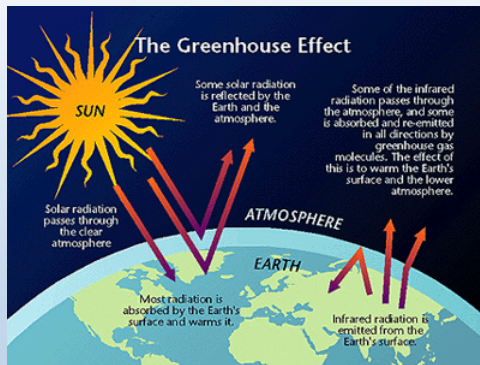
MINISTERO DELL'AMBIENTE
E DELLA TUTELA DEL TERRITORIO E DEL MARE

Factors affecting the Climate

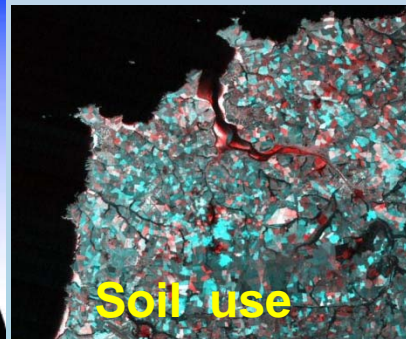
THE ALPINE CONVENTION IS THE FIRST INTERNATIONAL TREATY FOR THE PROTECTION AND PROMOTION OF THE SUSTAINABLE DEVELOPMENT OF A CROSS-BORDER MOUNTAINOUS REGION
italian presidency 2013-2014
alpine convention

HUMAN FACTORS

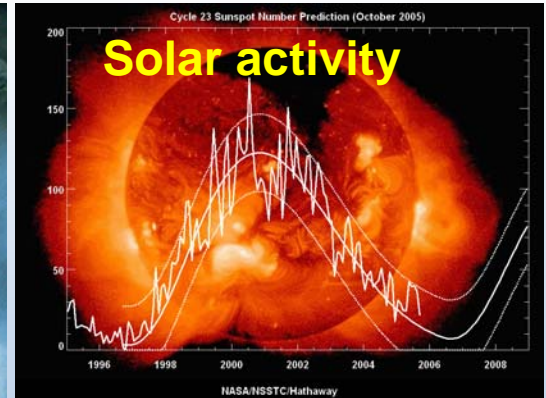
Greenhouse gasses



Atmospheric Aerosol



Volcanic activity



Natural variability

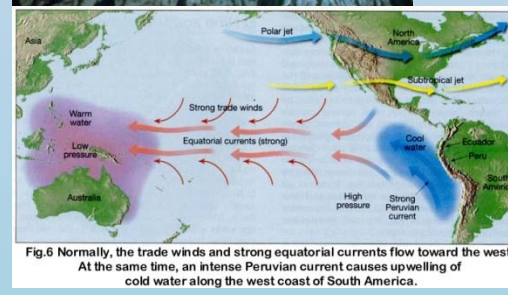
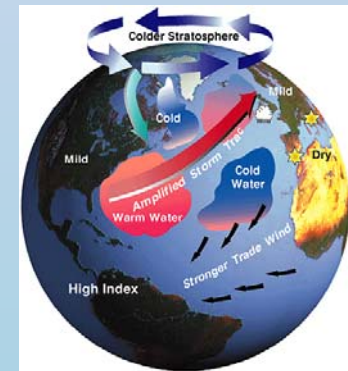


Fig.6 Normally, the trade winds and strong equatorial currents flow toward the west. At the same time, an intense Peruvian current causes upwelling of cold water along the west coast of South America.



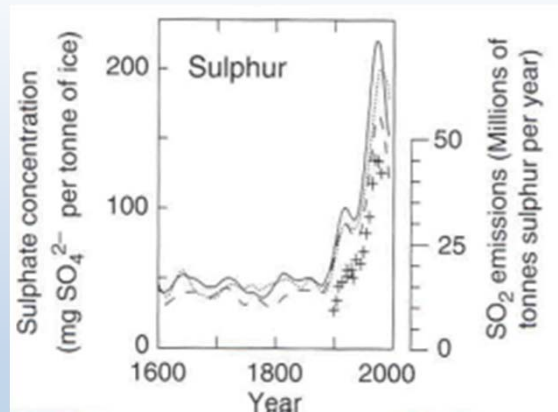
Permanent Secretariat of the Alpine Convention

ALPINE CONVENTION

info@alpcnv.org

www.alpcnv.org

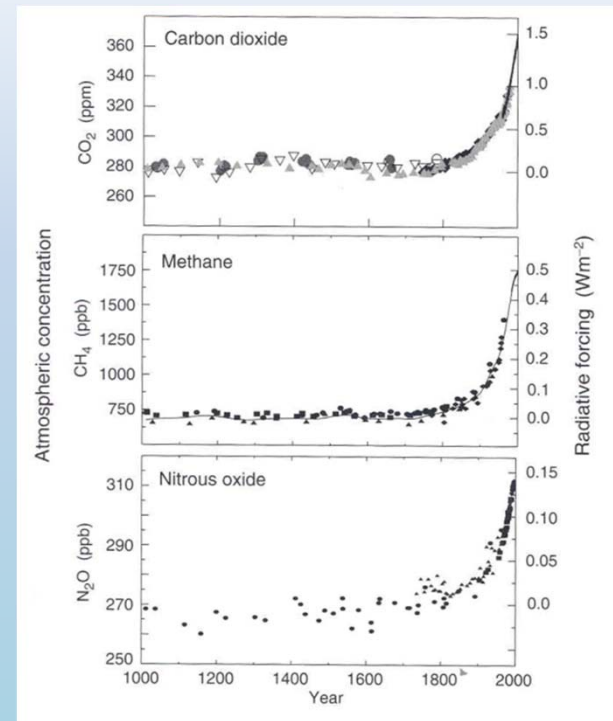
Concentrations of greenhouse gasses



Sulphate aerosols deposited in Greenland ice

The concentration of greenhouse gasses is today the largest observed in the last 65000 years and shows a clear increasing trend.

Global atmospheric concentrations of three well mixed greenhouse gases

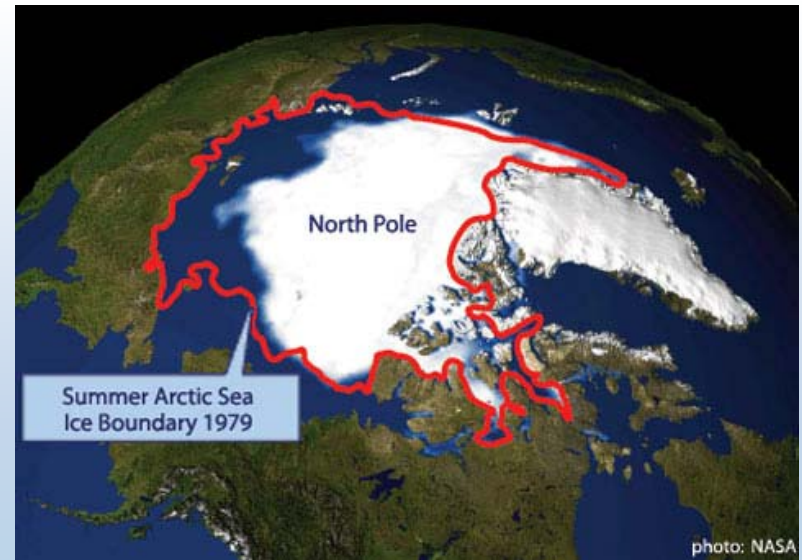
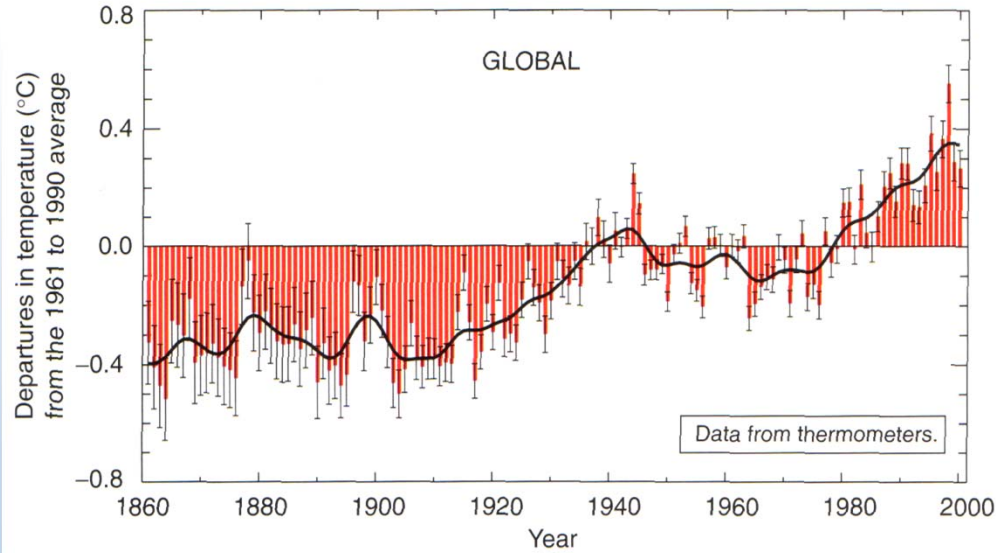




MINISTERO DELL'AMBIENTE
E DELLA TUTELA DEL TERRITORIO E DEL MARE

Effects of emissions in the climate

THE ALPINE CONVENTION IS THE FIRST INTERNATIONAL TREATY FOR THE PROTECTION AND PROMOTION OF THE SUSTAINABLE DEVELOPMENT OF A CROSS-BORDER MOUNTAINOUS REGION
italian presidency 2013-2014
alpine convention



Combined annual land-surface air and sea surface temperature anomalies ($^{\circ}\text{C}$) 1861 to 2000 relative to 1961 and 1990. Two standard error uncertainties are shown as bars on the annual number.

IPCC-2007

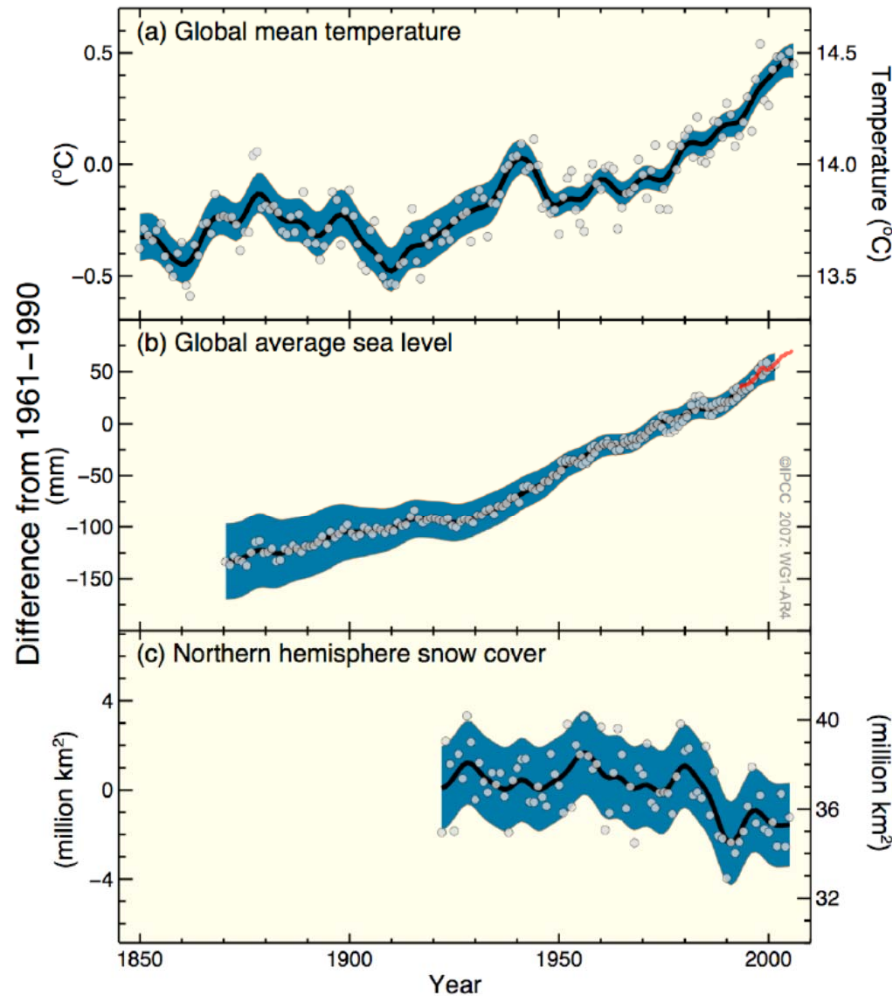
Global warming cannot be neglected, as shown by the increase of temperature of the atmosphere and the oceans, ice melting and increase of the sea levels.



MINISTERO DELL'AMBIENTE
E DELLA TUTELA DEL TERRITORIO E DEL MARE

Effects of emissions in the climate

THE ALPINE CONVENTION IS THE FIRST INTERNATIONAL TREATY FOR THE PROTECTION AND PROMOTION OF THE SUSTAINABLE DEVELOPMENT OF A CROSS-BORDER MOUNTAINOUS REGION
italian presidency 2013-2014
alpine convention



But what is happening
and most likely will
happen at the
catchment scale?



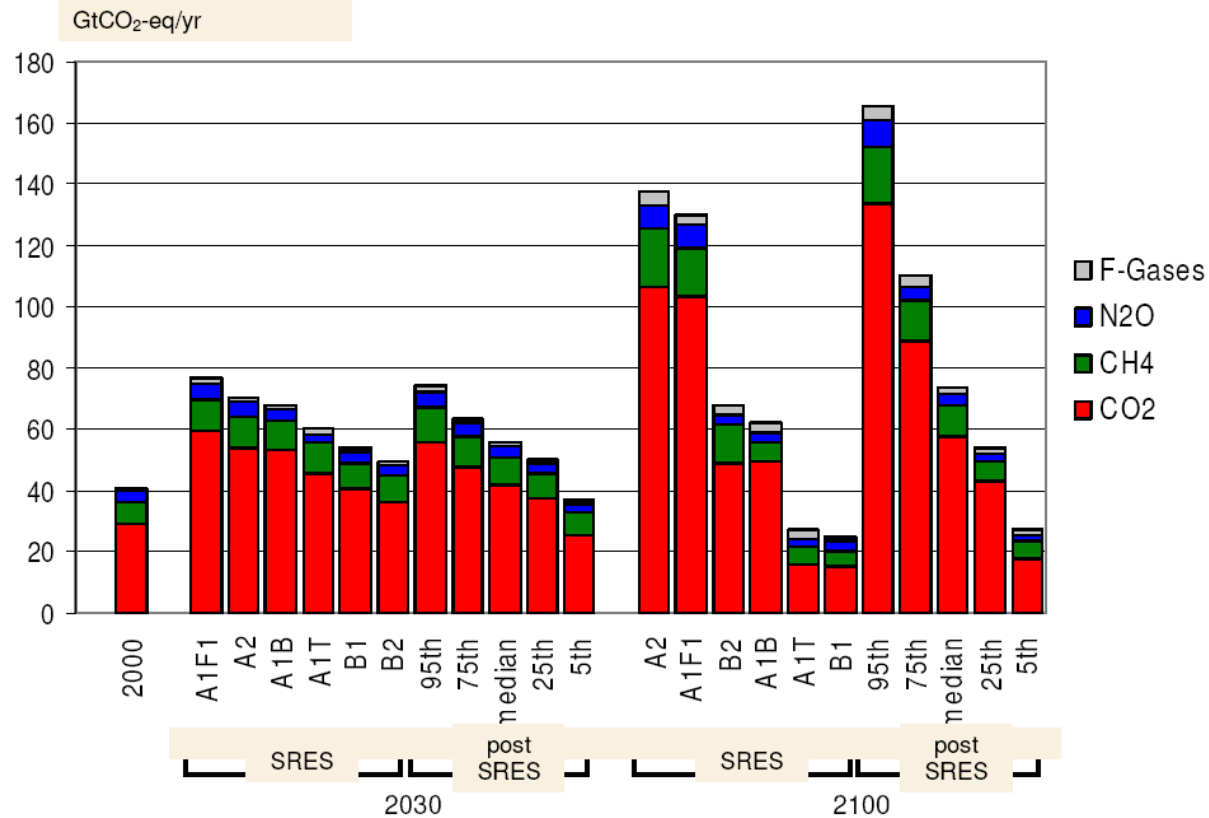
Permanent Secretariat of the Alpine Convention

ALPINE CONVENTION

info@alpcnv.org

www.alpcnv.org

Possible scenarios

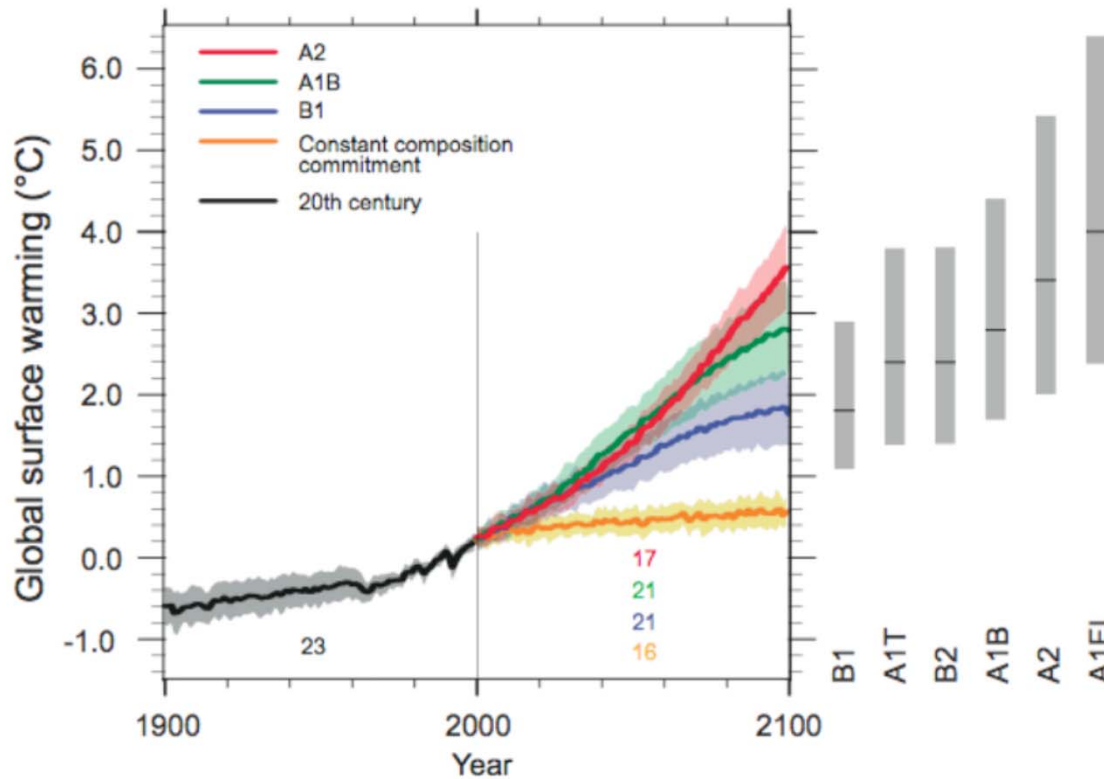




MINISTERO DELL'AMBIENTE
E DELLA TUTELA DEL TERRITORIO E DEL MARE

Scenarios

THE ALPINE CONVENTION IS THE FIRST INTERNATIONAL TREATY FOR THE PROTECTION AND PROMOTION OF THE SUSTAINABLE DEVELOPMENT OF A CROSS-BORDER MOUNTAINOUS REGION
italian presidency 2013-2014
alpine convention



Permanent Secretariat of the Alpine Convention

ALPINE CONVENTION

info@alpcnv.org

www.alpcnv.org



MINISTERO DELL'AMBIENTE
E DELLA TUTELA DEL TERRITORIO E DEL MARE

Needs for Forecasting

THE ALPINE CONVENTION IS THE FIRST INTERNATIONAL TREATY FOR THE PROTECTION AND PROMOTION OF THE SUSTAINABLE DEVELOPMENT OF A CROSS-BORDER MOUNTAINOUS REGION
italian presidency 2013-2014
alpine convention

- Risk is part of the human live, the sophistication of the impacts and interrelation of the modern society shows that the risk is increasing and the perception and knowledge of the integrated impacts are small.
- There is a need to increase information for population in dealing with uncertainties and risks.
- Managing uncertainties and risks requires the development of forecast tools and scenarios.
- Forecasting is an important tool to support water resource management in reducing its vulnerability.



Permanent Secretariat of the Alpine Convention

ALPINE CONVENTION

info@alpcnv.org

www.alpcnv.org



MINISTERO DELL'AMBIENTE
E DELLA TUTELA DEL TERRITORIO E DEL MARE

Models and measurements

THE ALPINE CONVENTION IS THE FIRST INTERNATIONAL TREATY FOR THE PROTECTION AND PROMOTION OF THE SUSTAINABLE DEVELOPMENT OF A CROSS-BORDER MOUNTAINOUS REGION
italian presidency 2013-2014
alpine convention

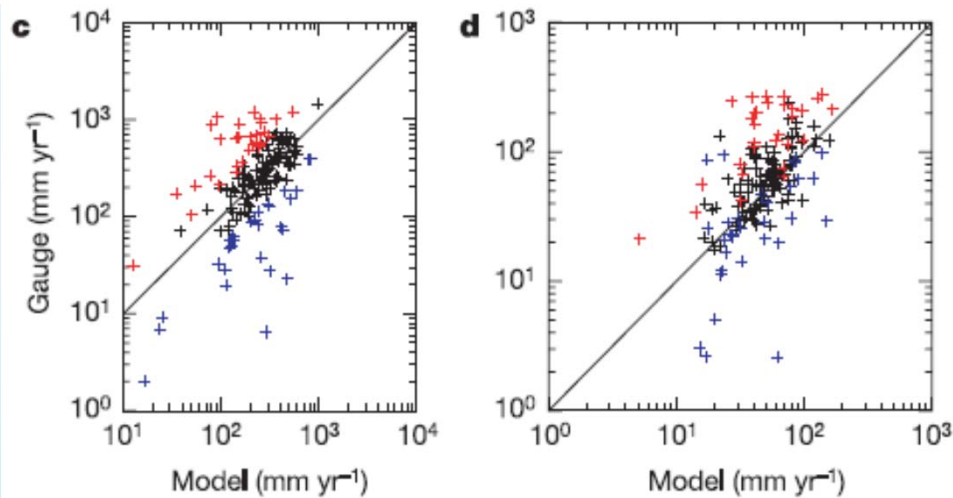
Vol 438 | 17 November 2005 | doi:10.1038/nature04312

nature

LETTERS

Global pattern of trends in streamflow and water availability in a changing climate

P. C. D. Milly¹, K. A. Dunne¹ & A. V. Vecchia²



Mean

Standard Deviation

12 GCMs

Scenario **A1B**

Streamflow measured in 165 river basins with surface larger than 50.000 km² (only gauges with at least 28 years are considered) during the period 1900-1998.

Ebro river basin: 100000 km²

Large prediction errors

Simulated streamflow mean and standard deviation are in the range between ½ to 2 times the observed values.



Permanent Secretariat of the Alpine Convention

ALPINE CONVENTION

info@alpcnv.org

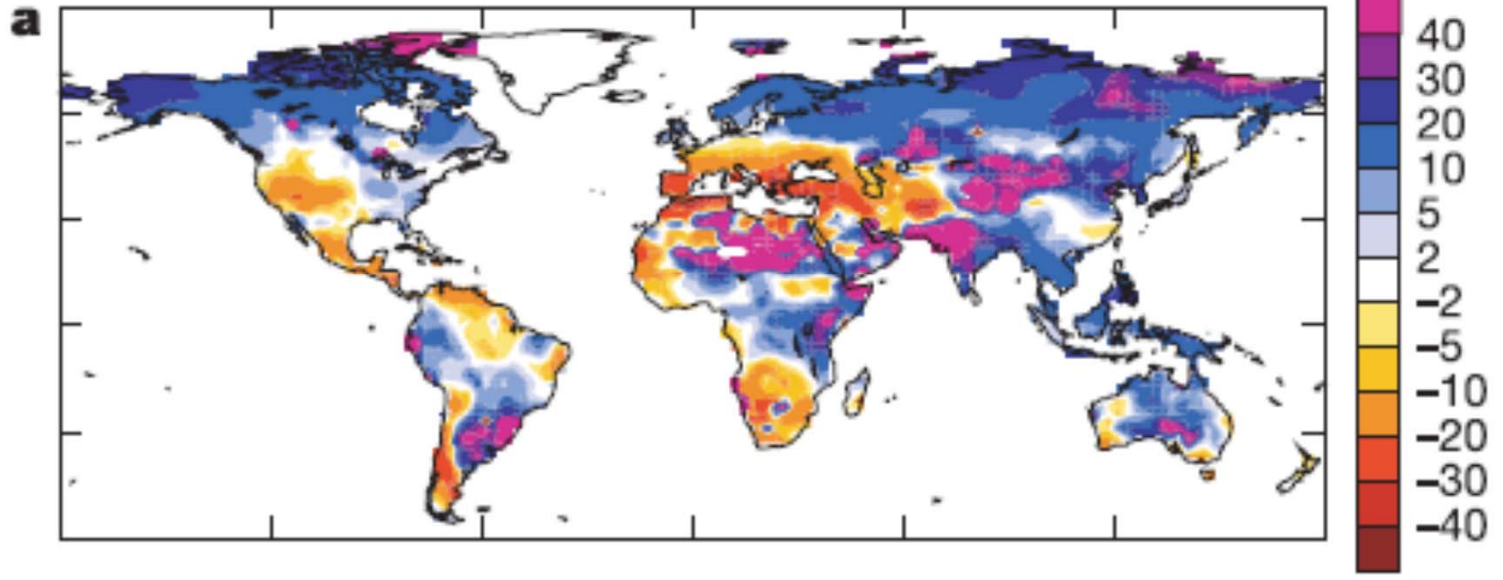
www.alpcnv.org



MINISTERO DELL'AMBIENTE
E DELLA TUTELA DEL TERRITORIO E DEL MARE

Models and measurements

THE ALPINE CONVENTION IS THE FIRST INTERNATIONAL TREATY FOR THE PROTECTION AND PROMOTION OF THE SUSTAINABLE DEVELOPMENT OF A CROSS-BORDER MOUNTAINOUS REGION
italian presidency 2013-2014
alpine convention



Reproduced from Milly et al., 2005

“Ensemble (arithmetic) mean of relative change (percentage) in runoff for the period 2041–60, computed as 100 times the difference between 2041–60 runoff in the SRESA1B experiments and 1900–70 runoff in the 20C3M experiments, divided by 1900–70 runoff.”



Permanent Secretariat of the Alpine Convention

ALPINE CONVENTION

info@alpcnv.org

www.alpcnv.org



Extreme Events more frequent?

THE ALPINE CONVENTION IS THE FIRST INTERNATIONAL TREATY FOR THE PROTECTION AND PROMOTION OF THE SUSTAINABLE DEVELOPMENT OF A CROSS-BORDER MOUNTAINOUS REGION
italian presidency 2013-2014
alpine convention

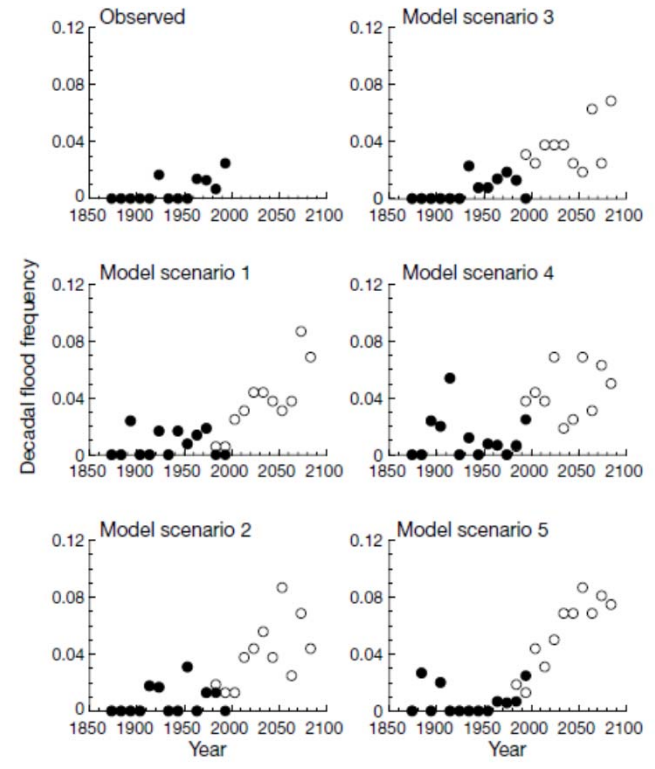
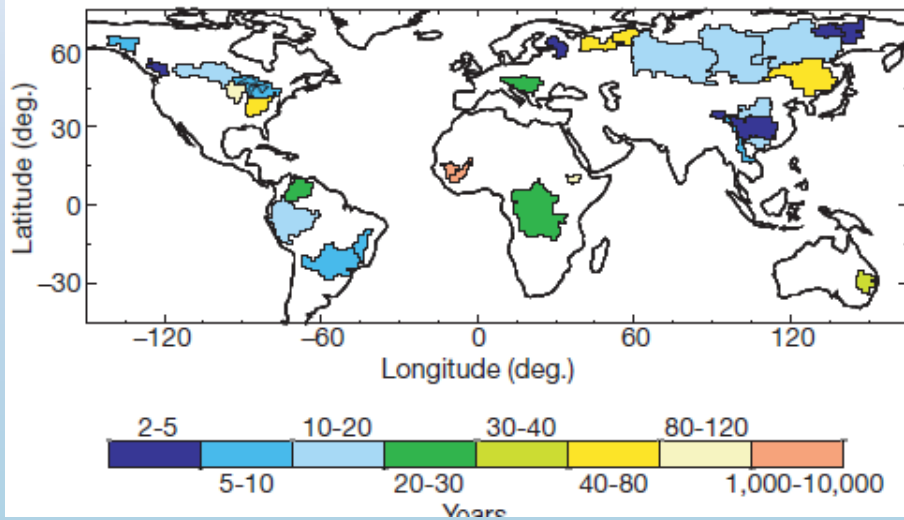
MINISTERO
DELLA TUTELA

NATURE | VOL 415 | 31 JANUARY 2002 | www.nature.com

Increasing risk of great floods in a changing climate

P. C. D. Milly*, R. T. Wetherald†, K. A. Dunne* & T. L. Delworth†

* US Geological Survey, GFDL/NOAA; and † Geophysical Fluid Dynamics Laboratory/NOAA, P.O. Box 308, Princeton, New Jersey 08542, USA



29 river basins with area larger than 200.000 km² and at least 30 yr of data

5 scenarios with same radiative forcing but different initial conditions



Permanent Secretariat of the Alpine Convention

ALPINE CONVENTION

info@alpcnv.org

www.alpcnv.org

Effects on Water Resources stationarity hypothesis?

WATER RESOURCES RESEARCH, VOL. 44, W03201, doi:10.1029/2007WR006704, 2008

When will Lake Mead go dry?

Tim P. Barnett¹ and David W. Pierce¹

SCIENCE VOL 319 1 FEBRUARY 2008

CLIMATE CHANGE

Stationarity Is Dead: Whither Water Management?

Climate change undermines a basic assumption that historically has facilitated management of water supplies, demands, and risks.

P. C. D. Milly,^{1*} Julio Betancourt,² Malin Falkenmark,³ Robert M. Hirsch,⁴ Zbigniew W. Kundzewicz,⁵ Dennis P. Lettenmaier,⁶ Ronald J. Stouffer⁷



ALPINE CONVENTION

Permanent Secretariat of the Alpine Convention

info@alpcnv.org

www.alpcnv.org



MINISTERO DELL'AMBIENTE
E DELLA TUTELA DEL TERRITORIO E DEL MARE

SCIENCE VOL 316 25 MAY 2007

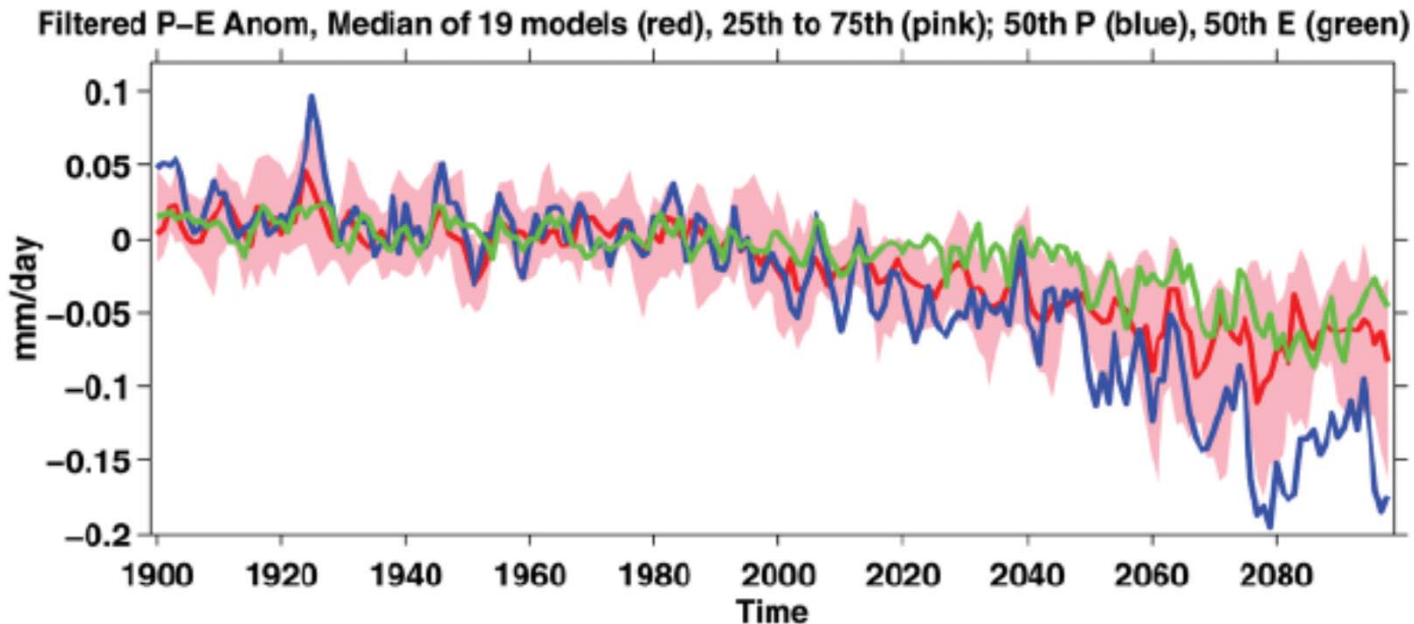
Need for Regional Studies

THE ALPINE CONVENTION IS THE FIRST INTERNATIONAL TREATY FOR THE PROTECTION AND PROMOTION OF THE SUSTAINABLE DEVELOPMENT OF A CROSS-BORDER MOUNTAINOUS REGION
italian presidency 2013-2014
alpine convention

Model Projections of an Imminent Transition to a More Arid Climate in Southwestern North America

19 RCMs

Richard Seager,^{1*} Mingfang Ting,¹ Isaac Held,^{2,3} Yochanan Kushnir,¹ Jian Lu,⁴
Gabriel Vecchi,² Huei-Ping Huang,¹ Nili Harnik,⁵ Ants Leetmaa,² Ngar-Cheung Lau,^{2,3}
Cuihua Li,¹ Jennifer Velez,¹ Naomi Naik¹



ON



Permanent Secretariat of the Alpine Convention

info@alpcnv.org

www.alpcnv.org

Multidisciplinary approach: Model coupling

WATER RESOURCES RESEARCH, VOL. 48, W01512, doi:10.1029/2011WR010985, 2012

Modeling the impacts of future climate change on water resources for the Gállego river basin (Spain)

B. Majone,¹ C. I. Bovolo,² A. Bellin,¹ S. Blenkinsop,² and H. J. Fowler²

Received 1 June 2011; revised 11 November 2011; accepted 22 November 2011; published 14 January 2012.

Objective:

develop an integrated model that integrates:

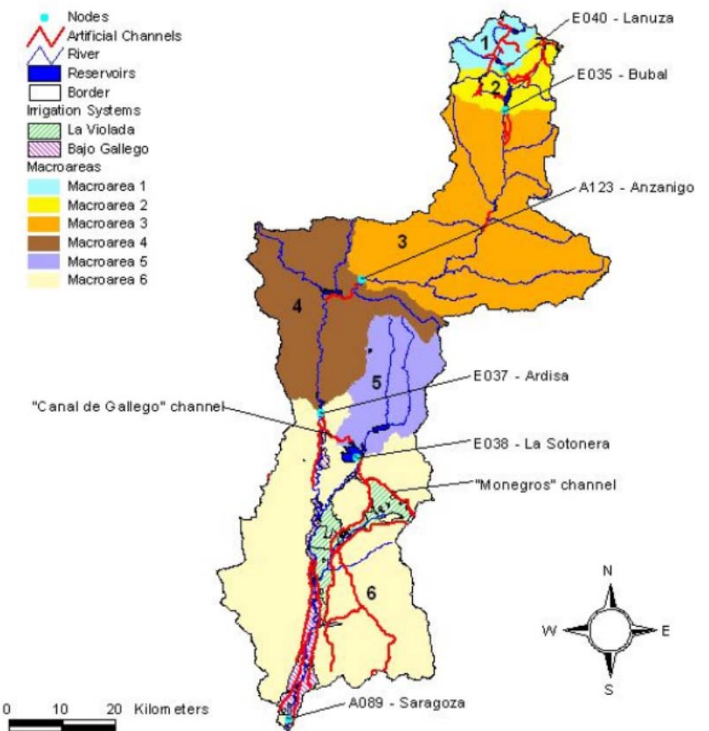
- bio-physical processes (*hydrology*)
- decision making and socio-economic processes (*how water is allocated and used*)

6 RCMs

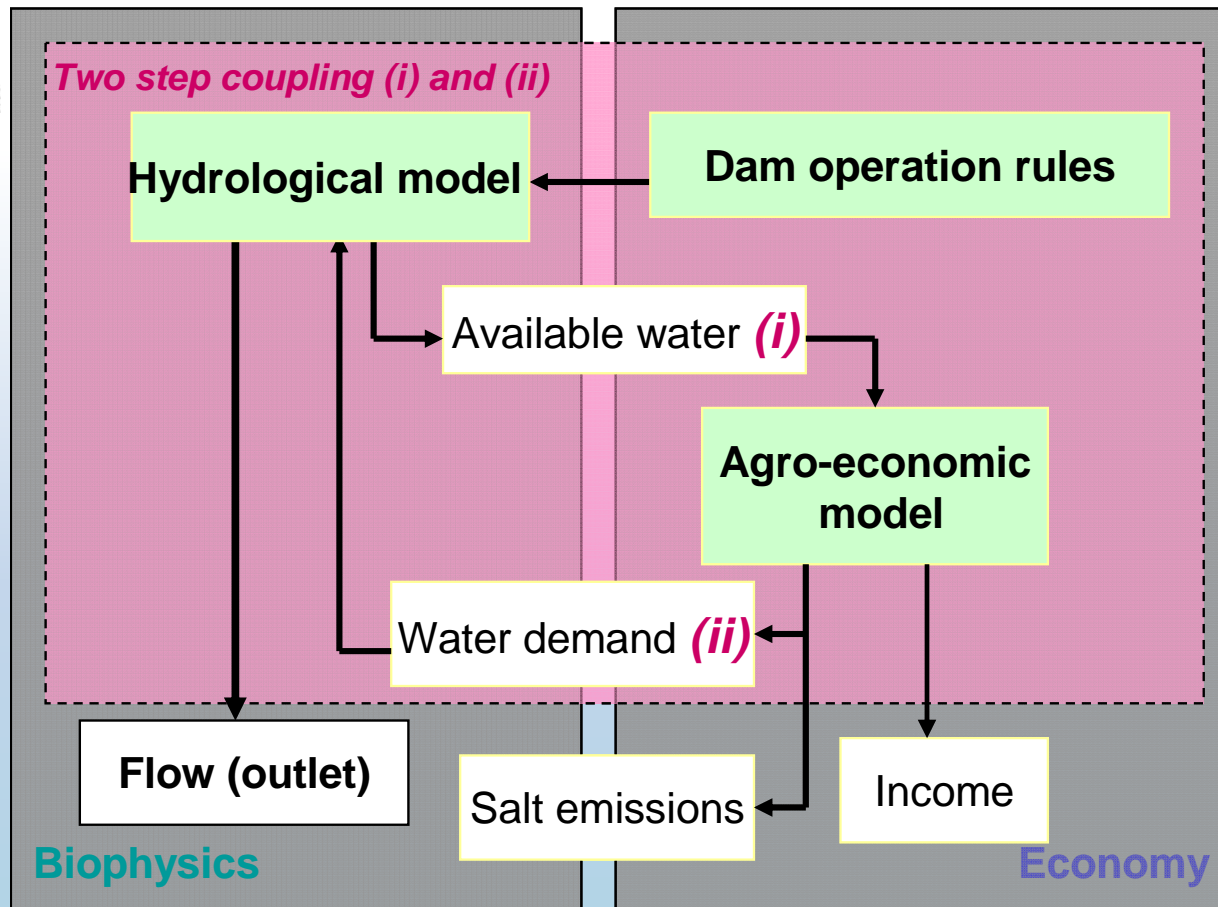
Hydrological Model

Agro-economic Model

Gallego river basin (Spain)



Integrated hydro-economic modeling

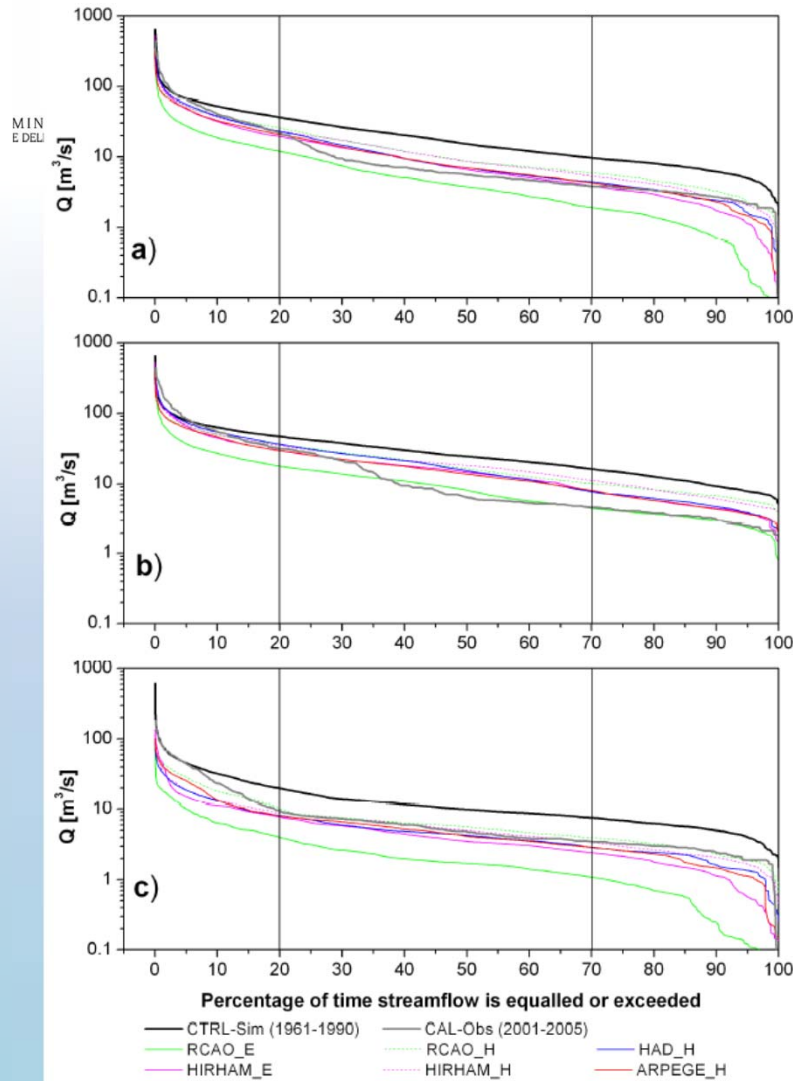


Graveline et al., 2013,
Reg. Env. Ch.
(under review)

Compartment approach: separate models for the different compartments which allow the output of one model to be used as input in the others.

Streamflow Flow Duration Curves

THE ALPINE CONVENTION IS THE FIRST INTERNATIONAL TREATY FOR THE PROTECTION AND PROMOTION OF THE SUSTAINABLE DEVELOPMENT OF A CROSS-BORDER MOUNTAINOUS REGION
 italian presidency 2013-2014
 alpine convention



Entire Year

6 RCMs

Storing period

GEOTRANSF model
 Calibration 2000-2005
 Validation 1961-1990

Irrigation Period

SCENARIOS
 2071-2100

Reproduced from Majone et al., 2012. *WRR*



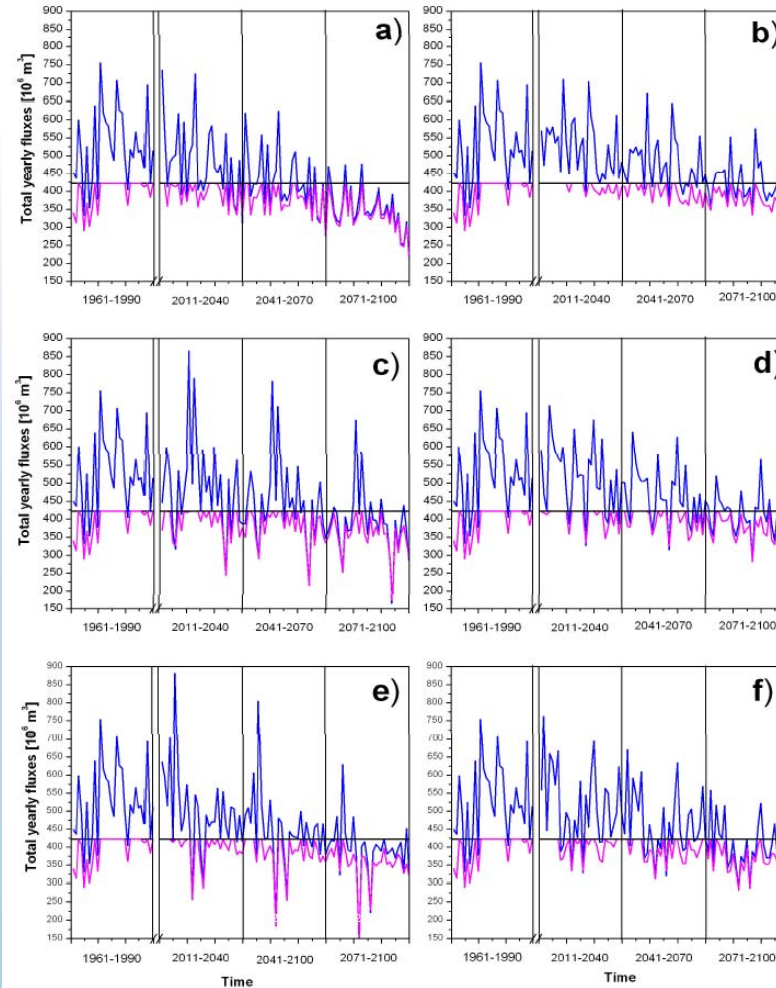
Permanent Secretariat of the Alpine Convention

ALPINE CONVENTION

info@alpcnv.org

www.alpcnv.org

Water delivered to agricultural systems



Reproduced from Majone et al., 2012. *WRR*



Results overview

Scenarios of change impacts on main indicators.

Mean values	Reference period	Climatic Change scenario	Dam extension scenario	Modernisation scenario	Global Change scenario
Irrigated area (ha)	15550	-3%	+5%	+4%	+20%
Total water delivery (hm ³ /year)	415	-4%	+6%	-2%	+16%
Average regional agricultural income (10 ⁶ €)	9.4	-8%	+9%	+27%	+48%
Salt emissions (tonnes/year)	248	-4%	+7%	+7%	+23%

- The combined effects of an increase in storage capacity and modernization mitigate the effect of reduced water availability due to climate change and they lead to an increase of the agricultural regional income of 48% compared with the reference scenario.
- Modernization of irrigation technology has also a very positive outcome on agricultural income, but at the cost of increased pressure on the environment through increased salinity.



MINISTERO DELL'AMBIENTE
E DELLA TUTELA DEL TERRITORIO E DEL MARE

CLIMB project

THE ALPINE CONVENTION IS THE FIRST INTERNATIONAL TREATY FOR THE PROTECTION AND PROMOTION OF THE SUSTAINABLE DEVELOPMENT OF A CROSS-BORDER MOUNTAINOUS REGION
italian presidency 2013-2014
alpine convention

CLIMATE INDUCED CHANGES OF HYDROLOGY IN THE MEDITERRANEAN BASINS



<http://www.climb-fp7.eu/home/home.php>



Permanent Secretariat of the Alpine Convention

ALPINE CONVENTION

info@alpcnv.org

www.alpcnv.org



MINISTERO DELL'AMBIENTE
E DELLA TUTELA DEL TERRITORIO E DEL MARE

Conclusions

THE ALPINE CONVENTION IS THE FIRST INTERNATIONAL TREATY FOR THE PROTECTION AND PROMOTION OF THE SUSTAINABLE DEVELOPMENT OF A CROSS-BORDER MOUNTAINOUS REGION
italian presidency 2013-2014
alpine convention

- Impact studies at the river basin scale require a coupling between climate models (global and regional) and hydrological models, and also a detailed definition of the scenarios for emissions and water resources management;
- Preparation of more reliable projections for water resources calls for additional research effort in order to improve coupling between climate and hydrological models.
- Assessment of uncertainty originating from different sources should complement Integrated Water Resources Management to explore alternative adaptation measures to climate change.
- Multidisciplinary approach allows to combine and test different factors of change order to simulate possible future outlooks. Such outlooks can assist decision makers in river basin planning by providing them a view of the basin with ongoing climate change effects as well as policies to adapt to these effects.



Permanent Secretariat of the Alpine Convention

ALPINE CONVENTION

info@alpcnv.org

www.alpcnv.org

Acknowledgements

MeteoTrentino, Incarico Speciale Sicurezza
Idraulica della Provincia Autonoma di Trento,
Autorità di Bacino dell' Adige, Ufficio Idrografico
della Provincia Autonoma di Bolzano

Acknowledgements

Special thanks to the Hydrologic group of the University of Trento

Alberto Bellin

Bruno Majone

Riccardo Rigon

Diego Avesani, Andrea Bertagnoli, Giacomo Bertoldi

Oscar Cainelli, Marta Castagna

Gabriele Chiogna, Emanuele Cordano, Matteo Dall' Amico

Stefano Endrizzi, Lorenzo Forlin

Alessandra Marzadri, Simonetta Rubol

Silvia Simoni, Christian Tiso

Daniele Tonina, Mauricio Zambrano

Fabrizio Zanotti and many others.....

Hydrologis

Smart Hydrogeological Solutions





MINISTERO DELL'AMBIENTE
E DELLA TUTELA DEL TERRITORIO E DEL MARE

THE
ALPINE
CONVENTION
IS THE FIRST
INTERNATIONAL
TREATY FOR
THE PROTECTION
AND PROMOTION
OF THE SUSTAINABLE
DEVELOPMENT
OF A CROSS-BORDER
MOUNTAINOUS
REGION

italian presidency 2013-2014
alpine convention

Thank you for your attention



Permanent Secretariat of the Alpine Convention

ALPINE CONVENTION

info@alpcnv.org

www.alpcnv.org